



VICINITY MAP



PROJECT DIRECTORY

DEVELOPER
 SAM DEVHARA
 CORE HOTELS, LLC
 212 SUTTER ST., 3RD FLOOR
 SAN FRANCISCO, CA 94108
 (415) 982-1416 ext 7051
 samd.corehotels@gmail.com

ARCHITECT:
 ROBERT SAUVAGEAU
 RYS ARCHITECTS, INC.
 10 MONTEREY BLVD.
 SAN FRANCISCO, CA 94131
 (415) 841-9090 ext. 202
 bobs@rysarchitects.com

LANDSCAPE:
 KEVIN LEAMY
 FUHRMAN LEAMY LAND GROUP
 2140 PROFESSIONAL DR #115
 ROSEVILLE, CA 95661
 (916) 783-5263
 kevinl@flandgroup.com

CIVIL:
 CASEY FEICKERT
 TSD ENGINEERING, INC.
 785 ORCHARD DR, SUITE 110
 FOLSOM, CA 95630
 (916) 608-0707 ext 103
 cfeickert@tsdeng.com

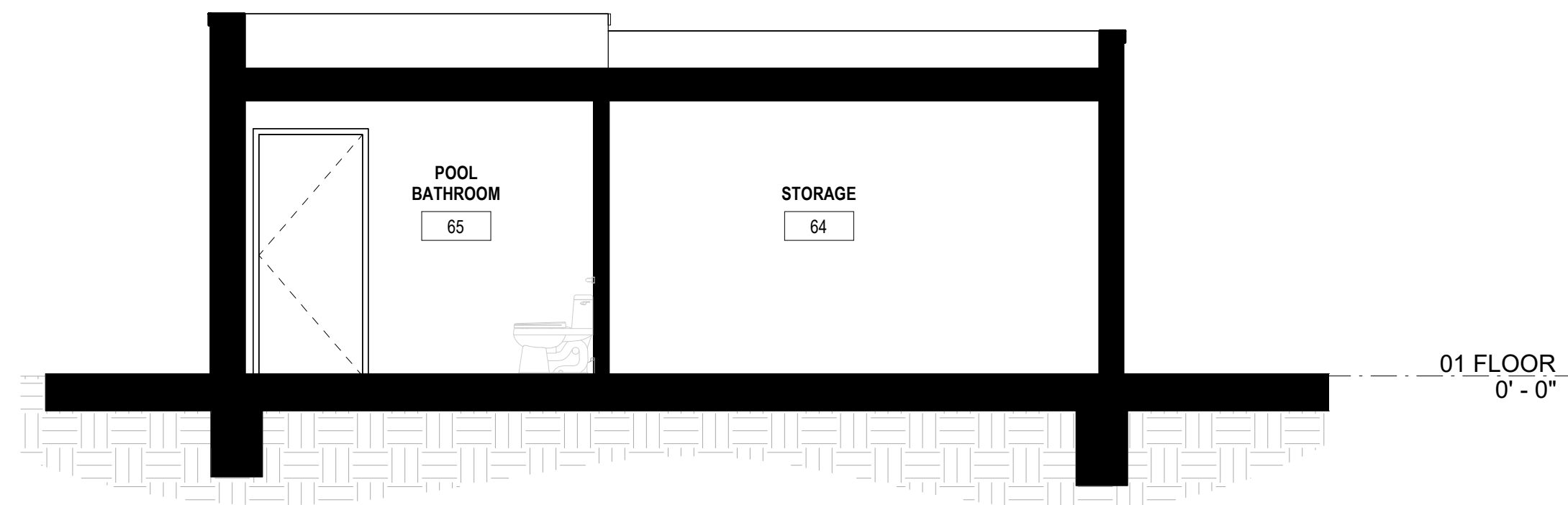
LIGHTING
 CHRIS SILVERMAN
 SILVERMAN & LIGHT
 1201 PARK AVE SUITE 100
 EMERVILLE, CA 94608
 (510) 655-1200
 chris@silvermanlight.com

PROJECT DESCRIPTION

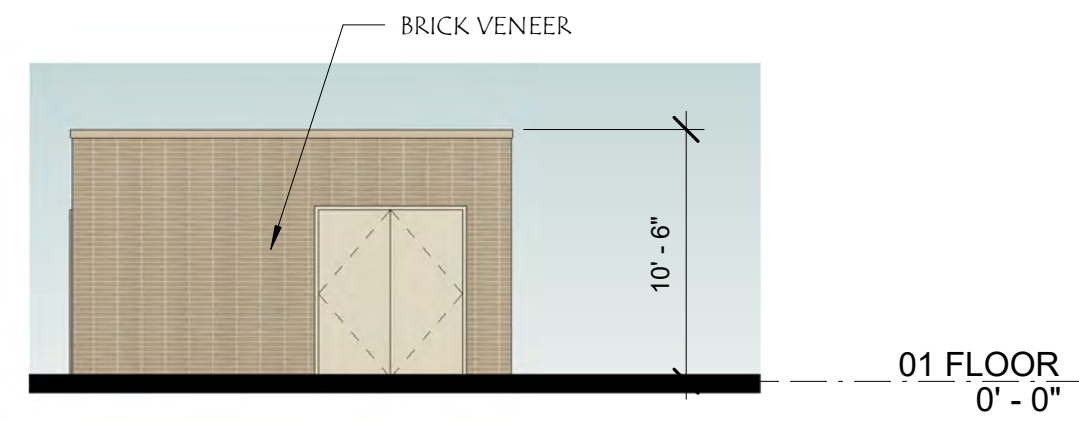
Homewood Suites is a four-story 115-guestroom extended stay hotel providing an up-scale experience for extended stay guest. The design of the Homewood Suites hotel uses varied textures, heights, and articulation of the exterior façade to complement the massing and design of the neighboring commercial properties. The building façade's materials are a warm mix of neutral tones applied in a simple and systematic manner that allows for changes in depth, color and texture. The building's base material provides a durable, strong finish that serves to anchor the building to the site. The main entry façade welcomes guests by using a strong architectural feature element with a warm accent material to focus the attention on the main arrival area, and the ground level main entrance provides a clear view through the central lobby area to the outdoor guest amenities in the courtyard beyond.

DRAWING INDEX

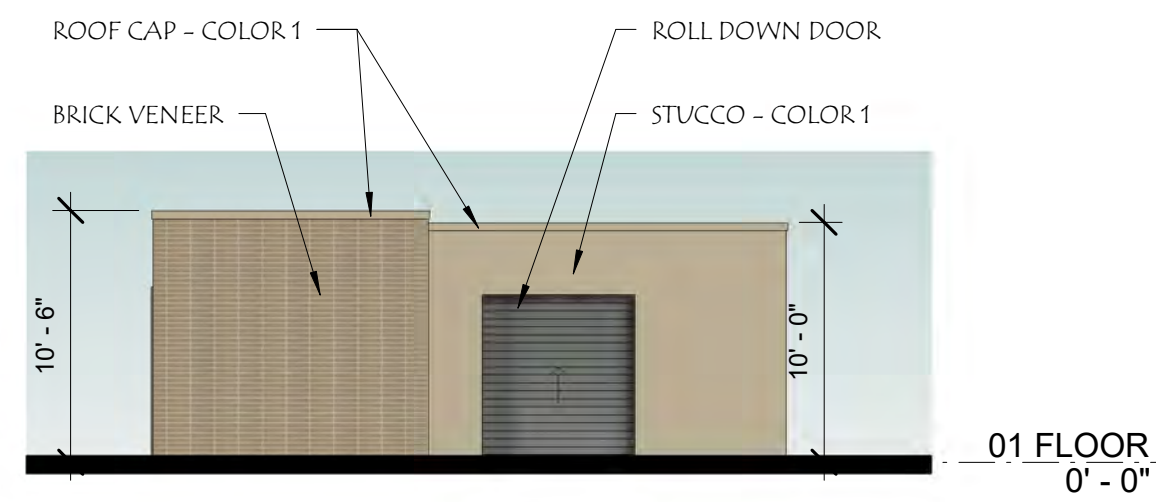
T1	COVER SHEET		
T2	PROJECT & SITE DATA		
A1	PRELIMINARY SITE PLAN	A7	EXTERIOR ELEVATIONS
A1.1	PRELIMINARY FIRE APPARATUS ACCESS DIAGRAM	A8	EXTERIOR ELEVATIONS
A1.2	SITE BUILDINGS	A9	COLOR ELEVATIONS
A2	FIRST FLOOR PLAN	A10	COLOR ELEVATIONS
A3	SECOND FLOOR PLAN	A11	BUILDING SECTIONS
A4	THIRD & FOURTH FLOOR PLAN	A12	COLORS & MATERIALS
A5	ROOF PLAN	A13	MASSING VIEWS
A6	ENLARGED GUESTROOM PLANS	A14	MASSING VIEWS



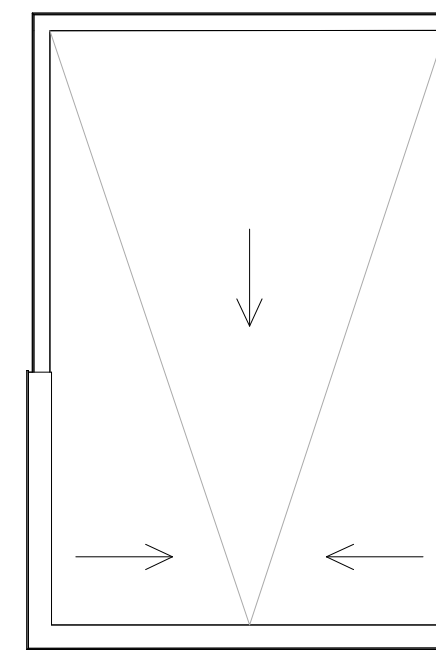
1 POOL BUILDING SECTION
1/4" = 1'-0"



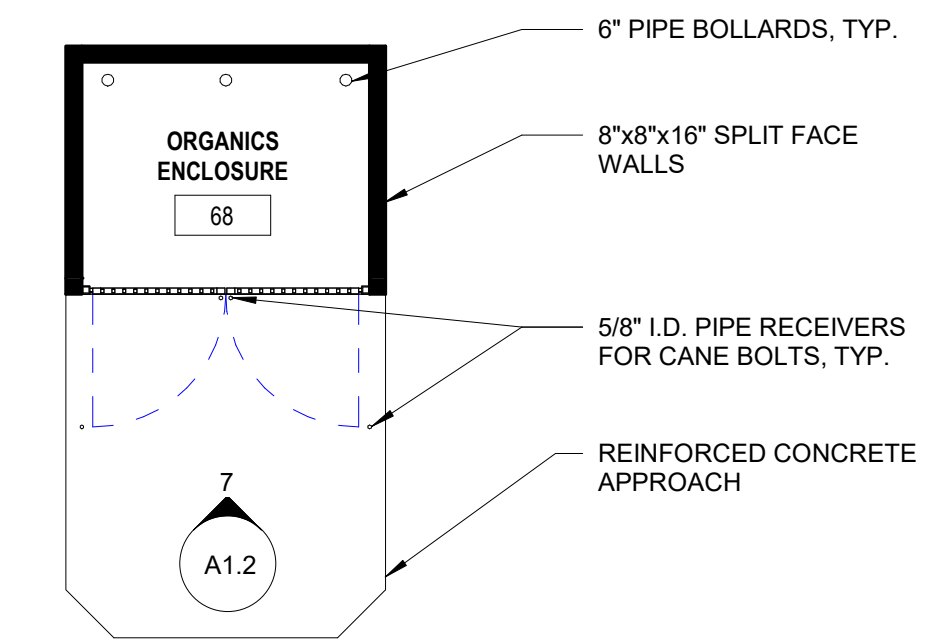
10 COLOR POOL EQUIPMENT SOUTH
1/8" = 1'-0"



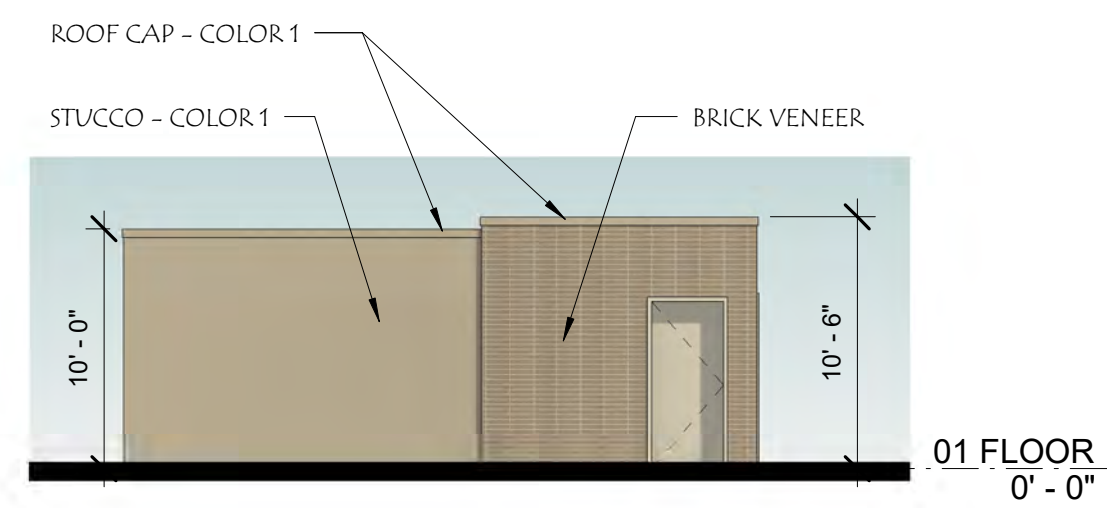
9 COLOR POOL EQUIPMENT EAST
1/8" = 1'-0"



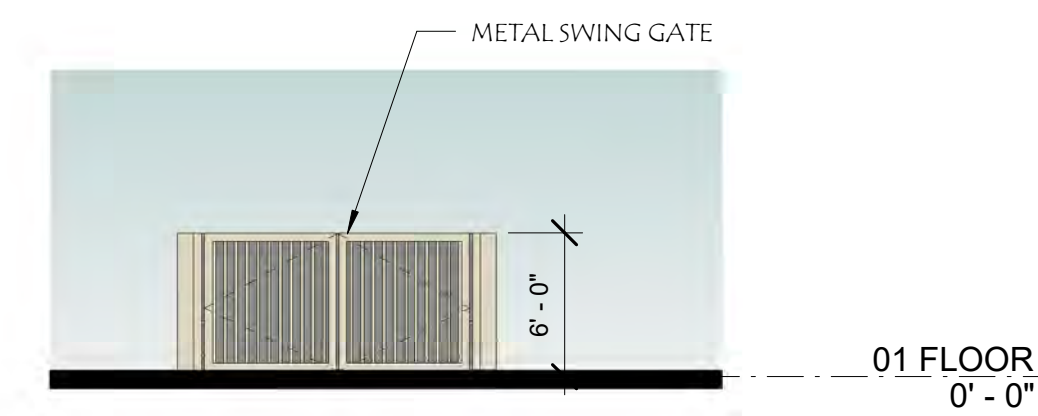
4 ENLARGED POOL BUILDING ROOF PLAN
1/8" = 1'-0"



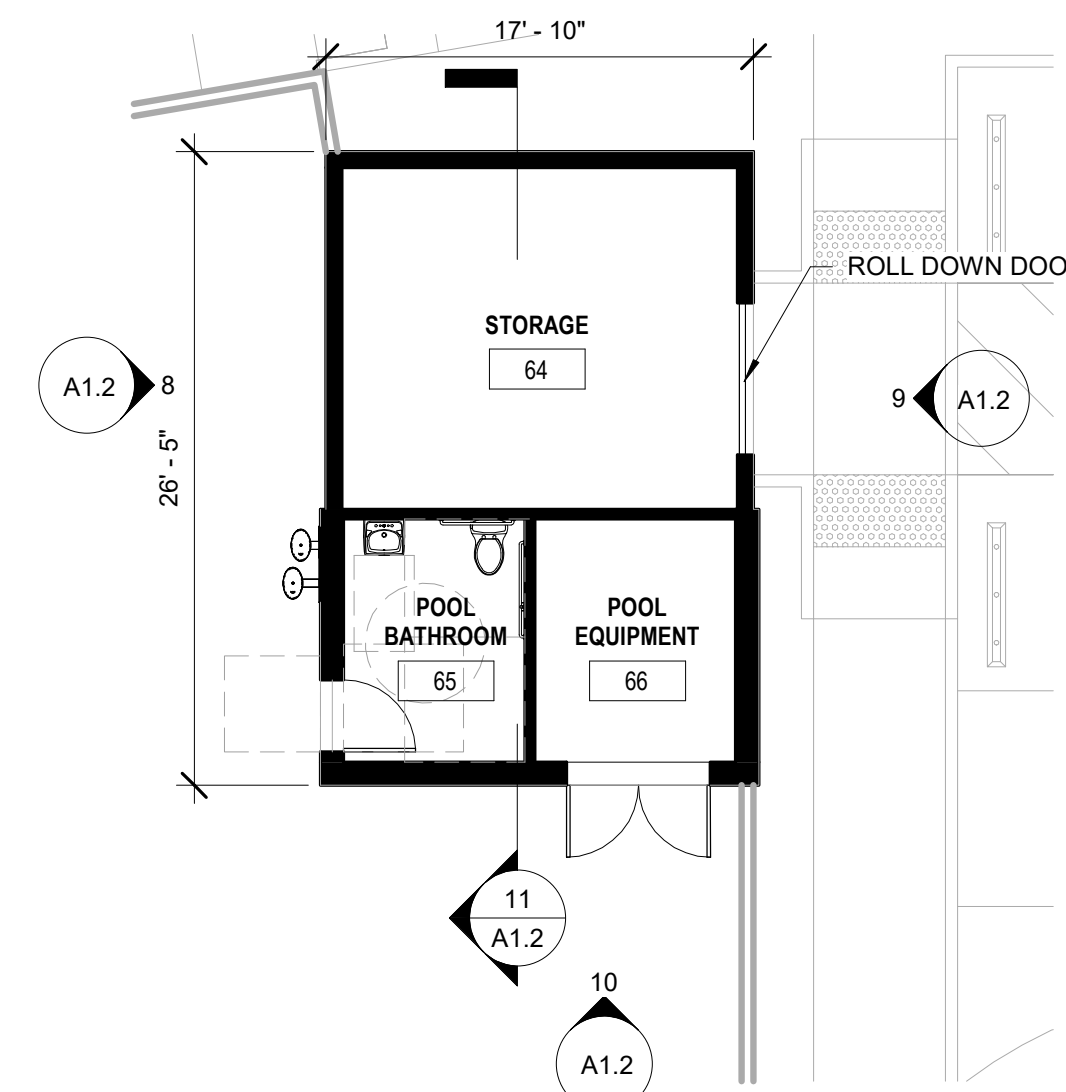
3 ENLARGED ORGANICS ENCLOSURE PLAN
1/8" = 1'-0"



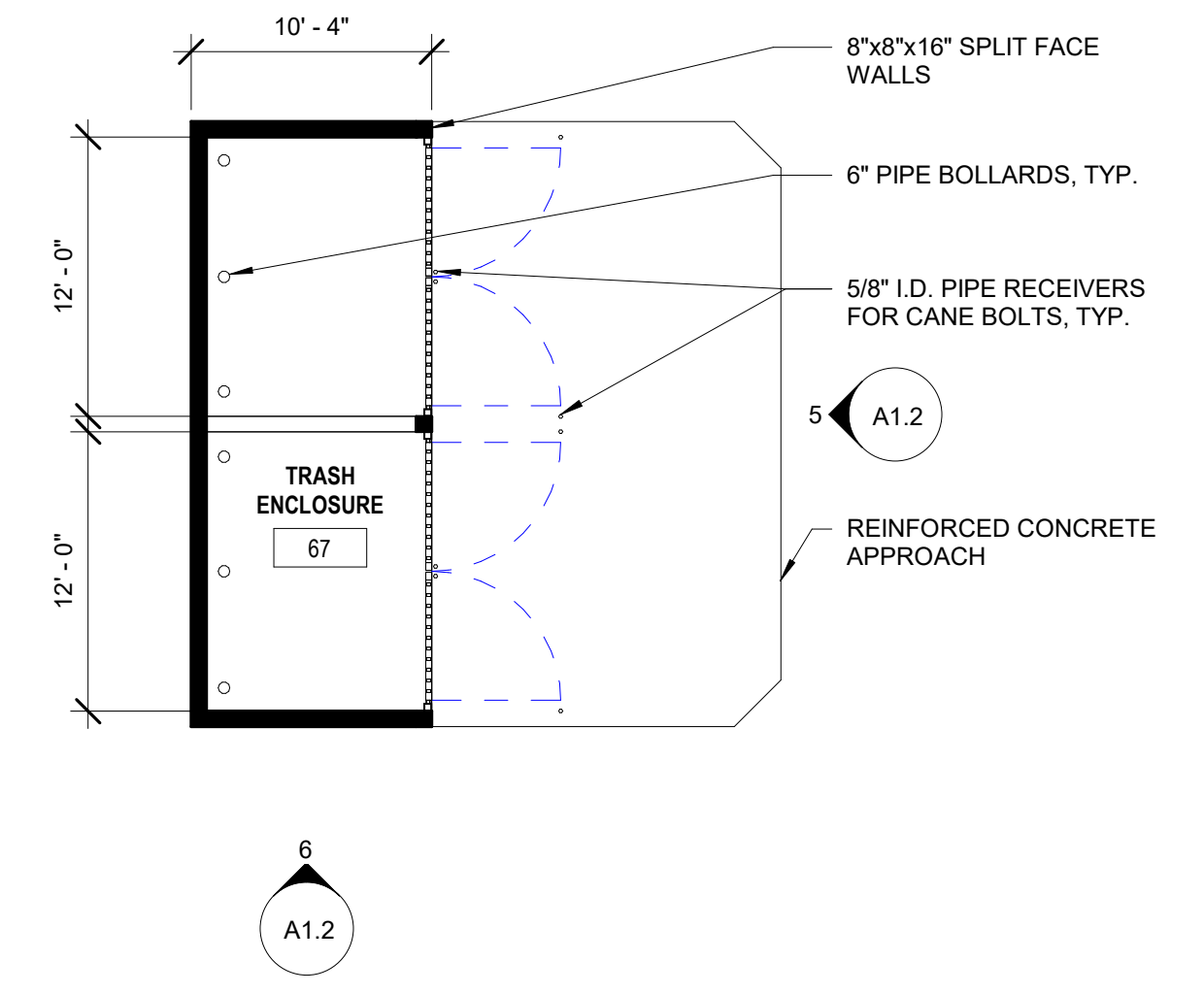
8 COLOR POOL EQUIPMENT WEST
1/8" = 1'-0"



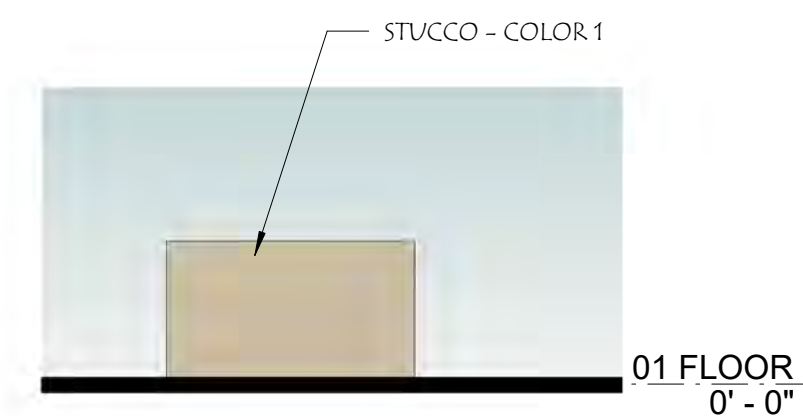
7 COLOR ORGANICS ELEVATION
1/8" = 1'-0"



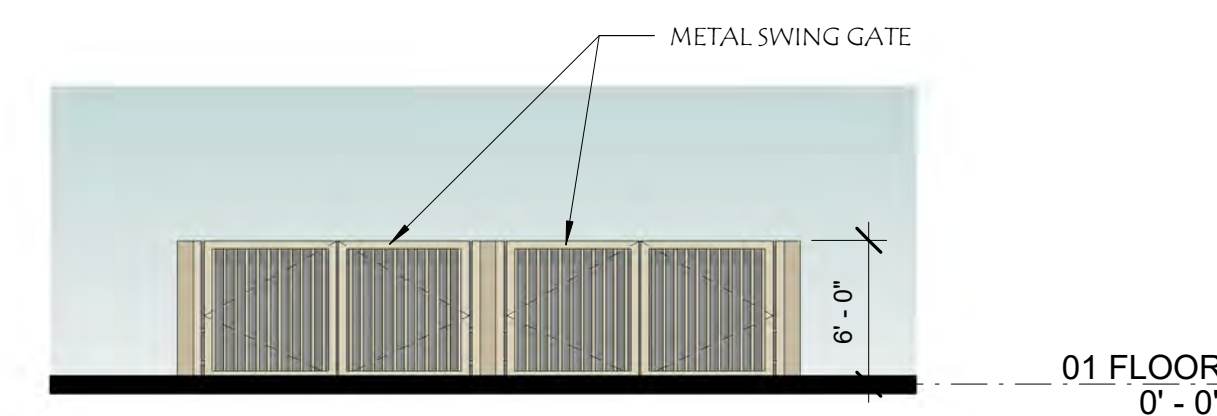
2 ENLARGED POOL BUILDING PLAN
1/8" = 1'-0"



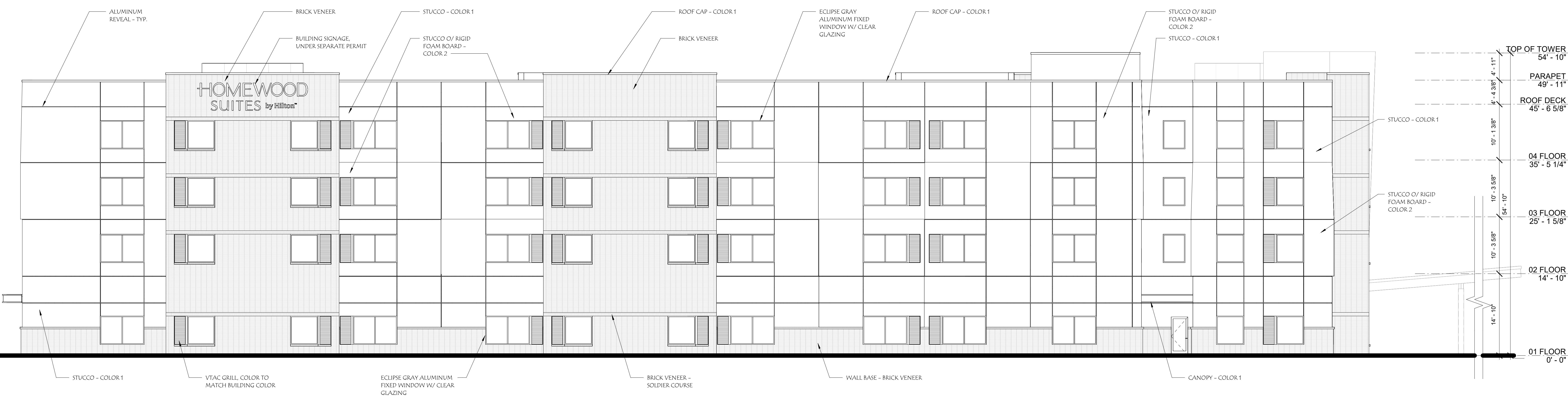
1 ENLARGED TRASH ENCLOSURE PLAN
1/8" = 1'-0"



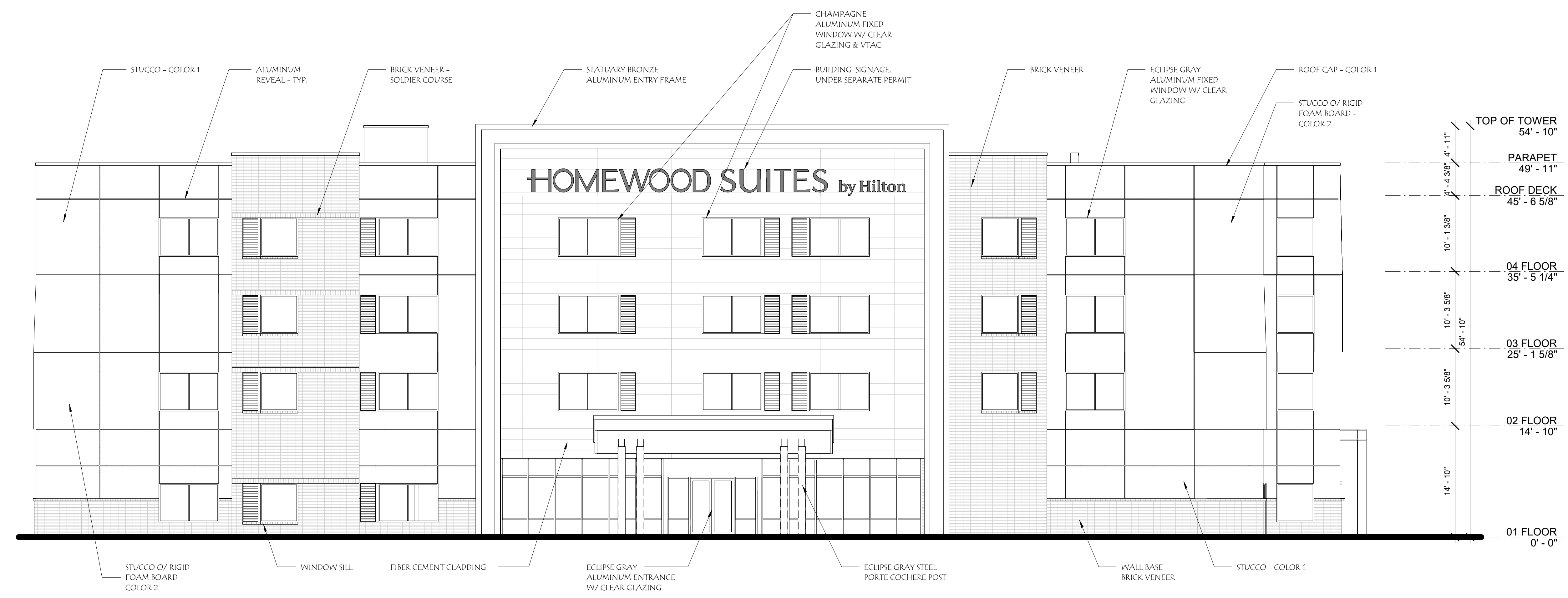
6 COLOR TRASH ENCLOSURE ELEV B
1/8" = 1'-0"



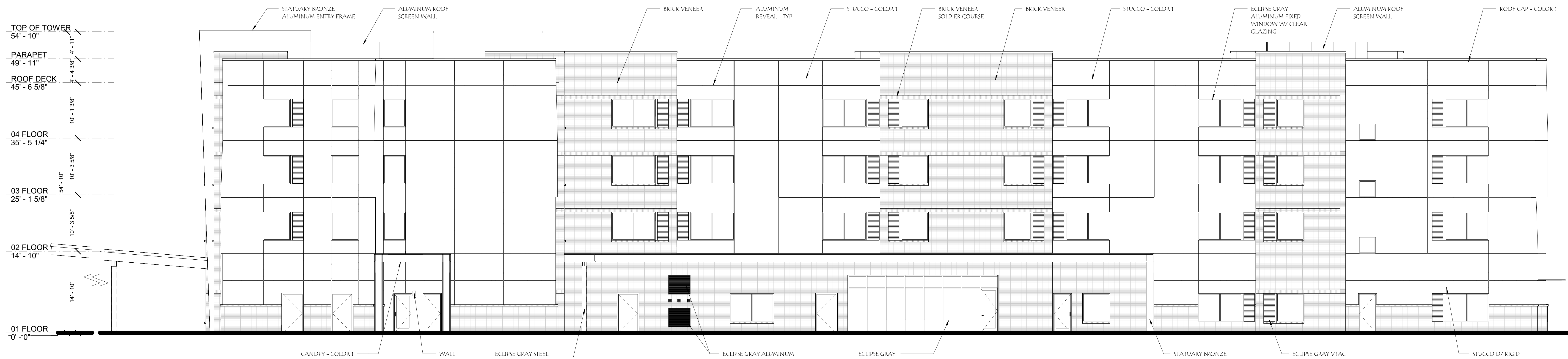
5 COLOR TRASH ENCLOSURE ELEV A
1/8" = 1'-0"



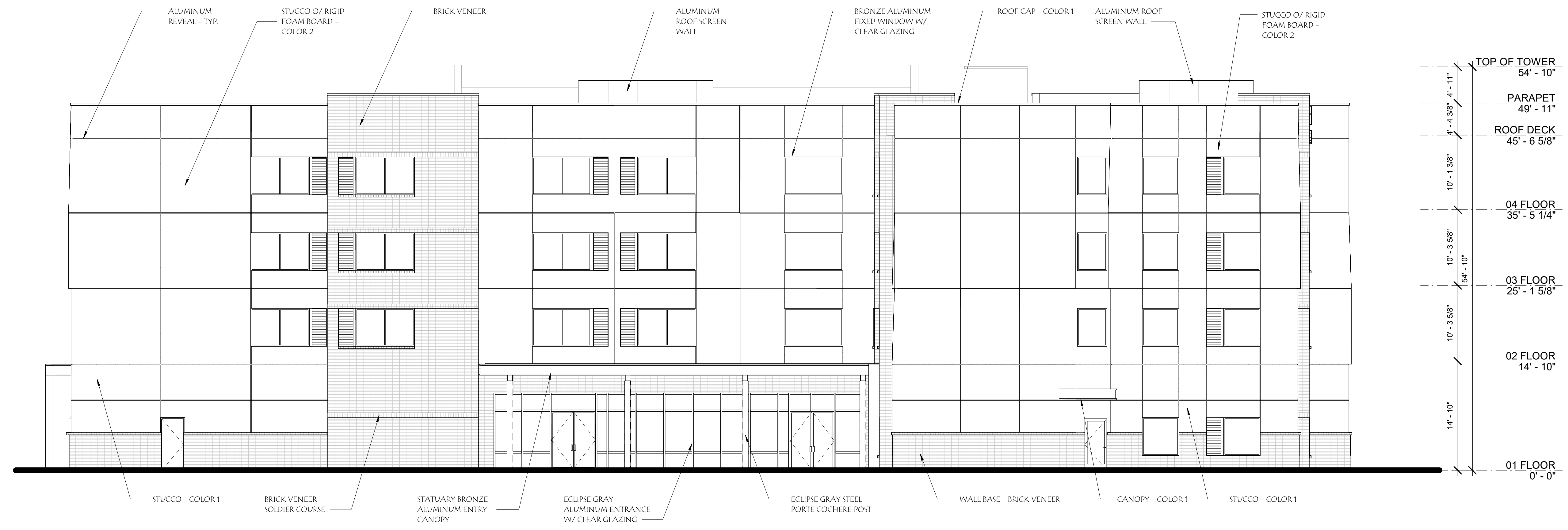
1 NORTH ELEVATION
1/8" = 1'-0"



2 WEST ELEVATION
1/8" = 1'-0"



① SOUTH ELEVATION
1/8" = 1'-0"



② EAST ELEVATION
1/8" = 1'-0"



① COLOR NORTH ELEVATION
1/8" = 1'-0"



② COLOR WEST ELEVATION
1/8" = 1'-0"

TOP OF TOWER
54' - 10"

PARAPET
49' - 11"

ROOF DECK
45' - 6 5/8"

04 FLOOR
35' - 5 1/4"

03 FLOOR
25' - 1 5/8"

02 FLOOR
14' - 10"

01 FLOOR
0' - 0"



① COLOR SOUTH ELEVATION
1/8" = 1'-0"



TOP OF TOWER
54' - 10"

PARAPET
49' - 11"

ROOF DECK
45' - 6 5/8"

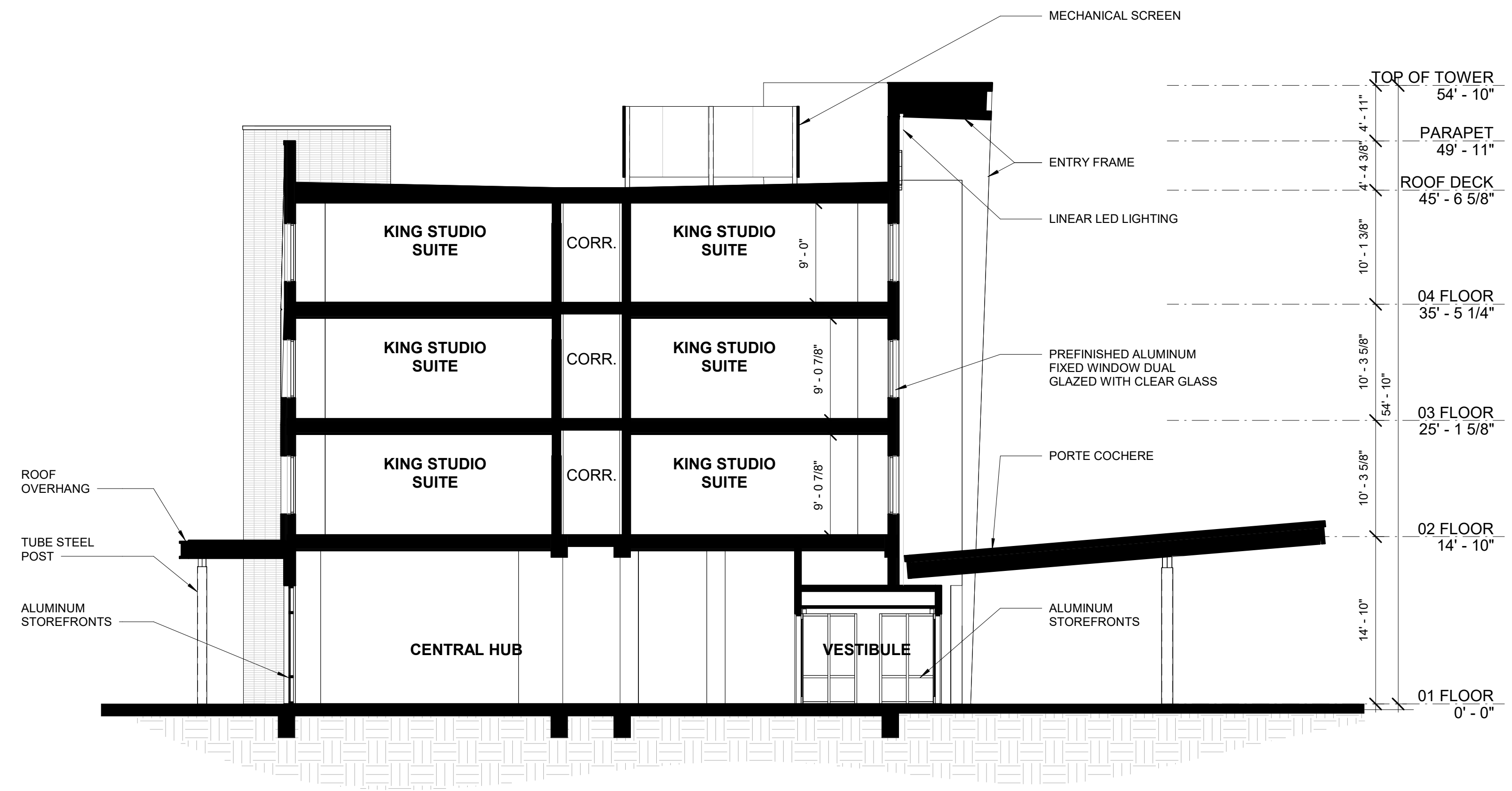
04 FLOOR
35' - 5 1/4"

03 FLOOR
25' - 1 5/8"

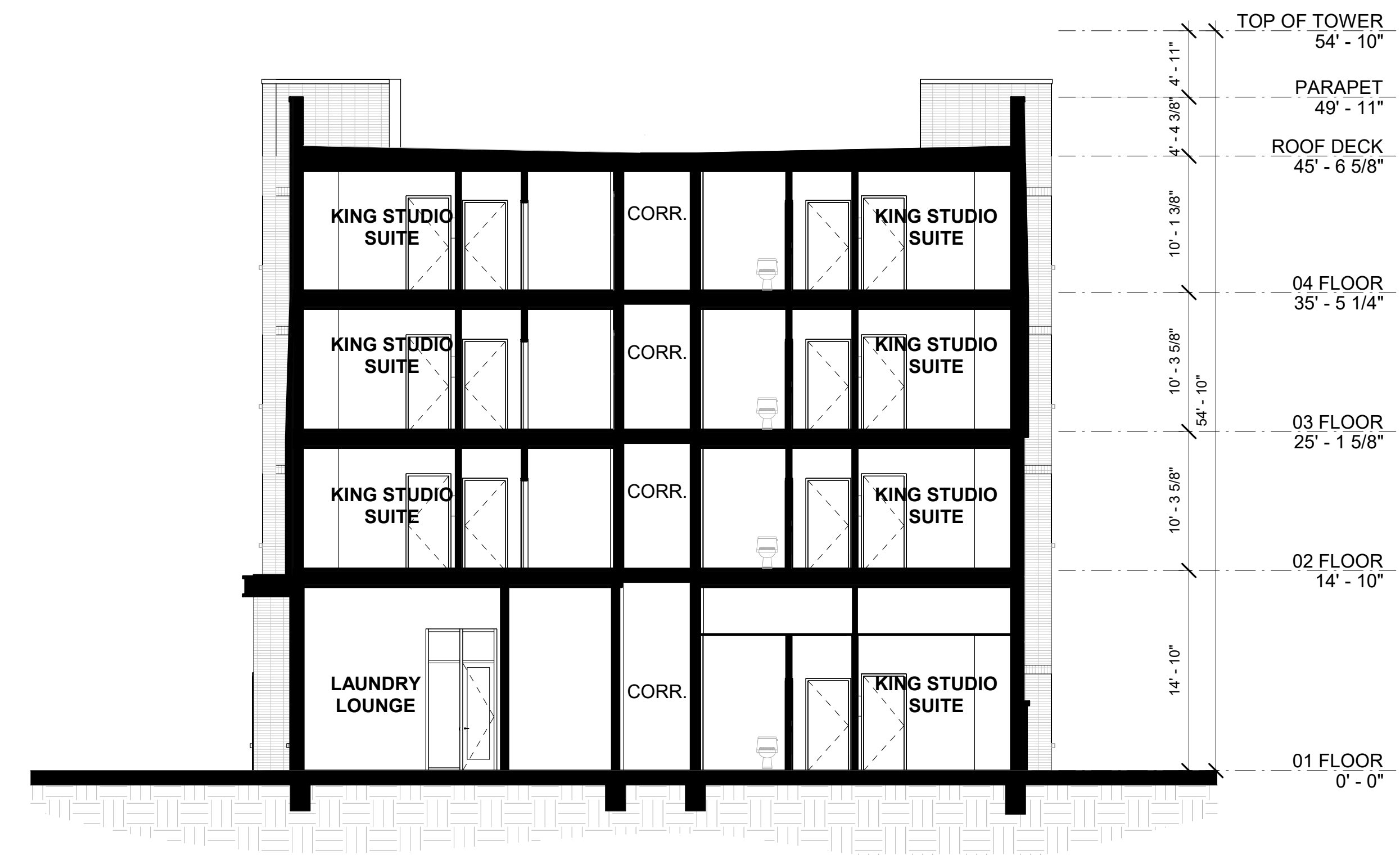
02 FLOOR
14' - 10"

01 FLOOR
0' - 0"

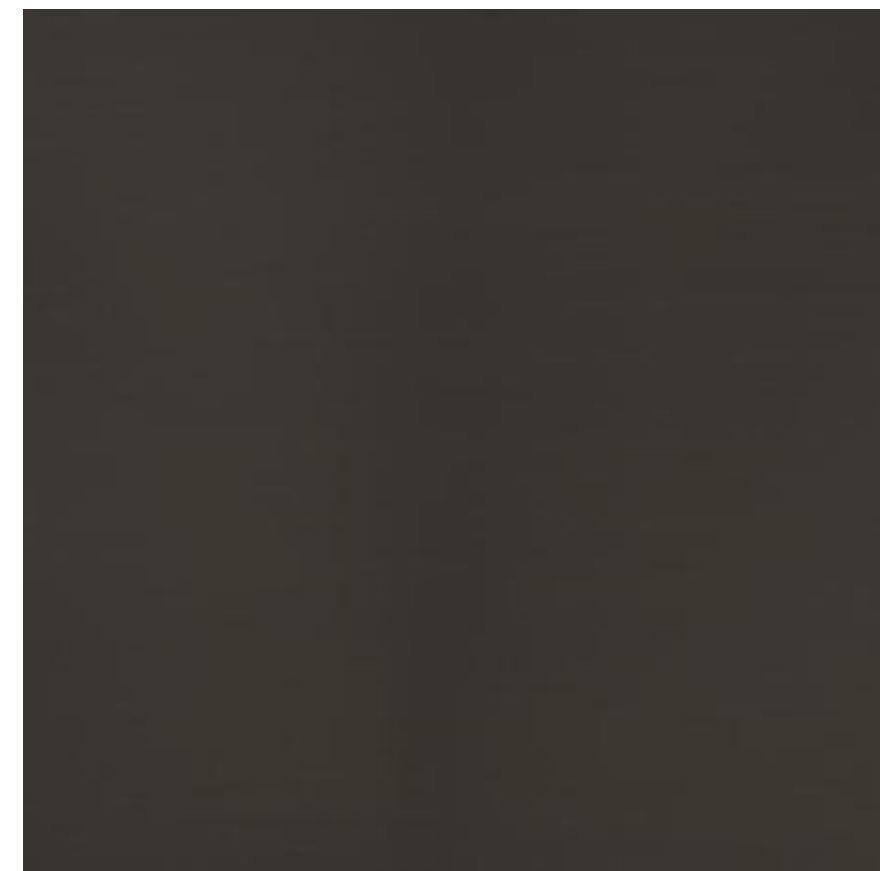
② COLOR EAST ELEVATION
1/8" = 1'-0"



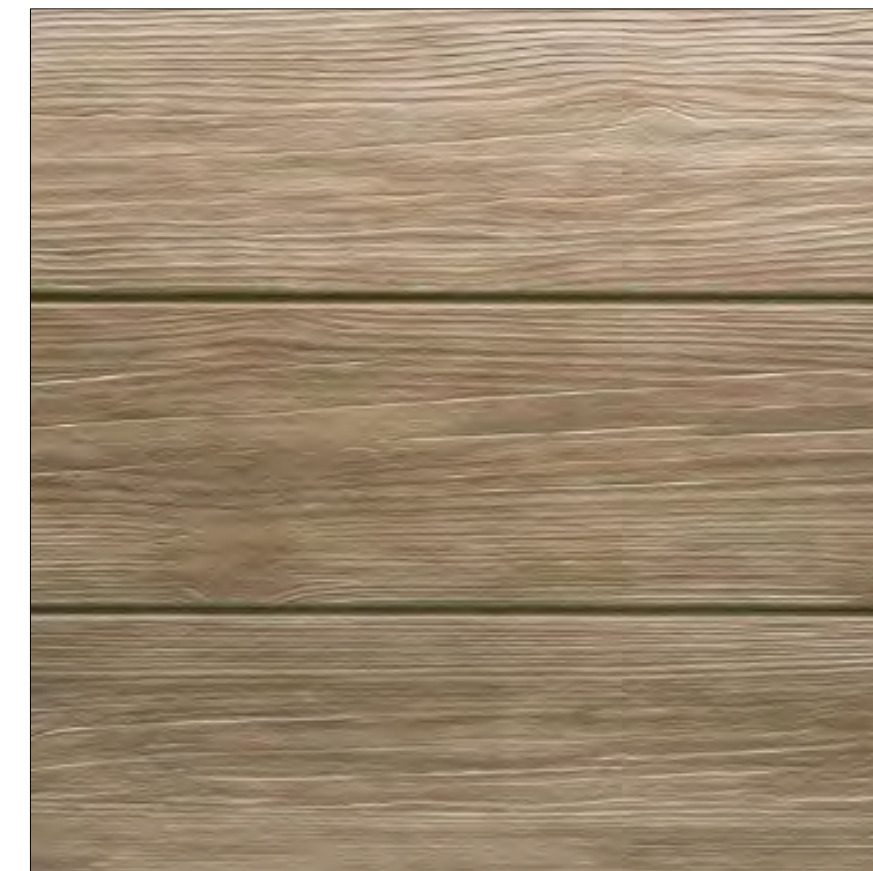
① BUILDING SECTION K-L
1/8" = 1'-0"



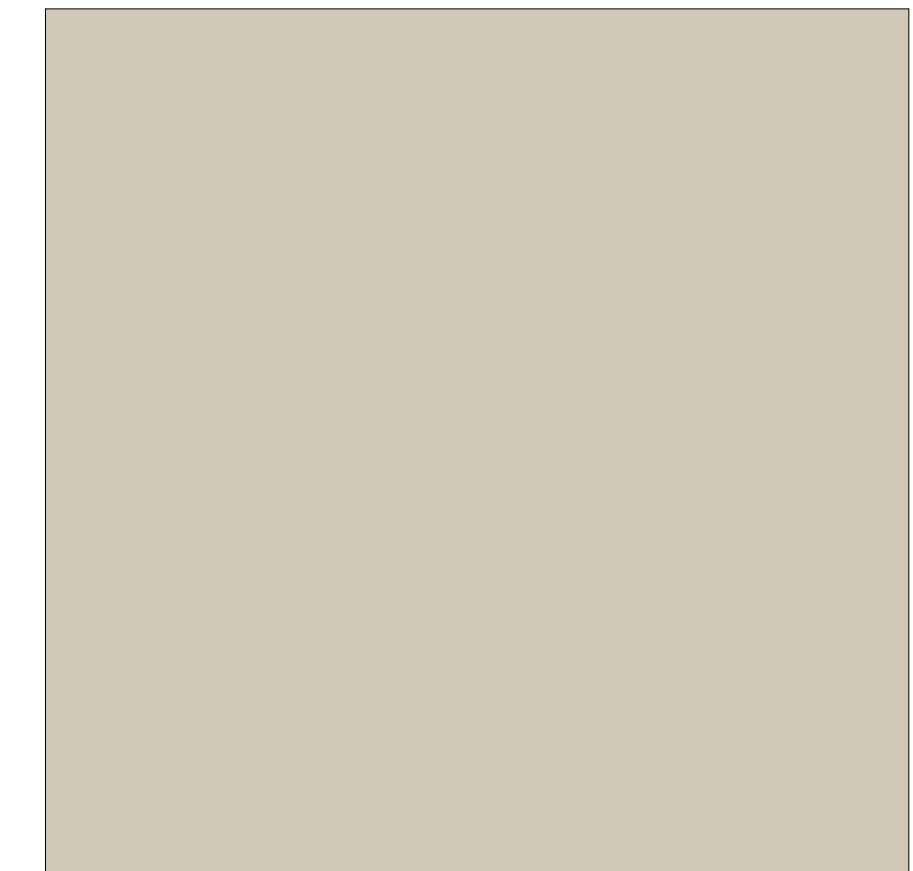
② BUILDING SECTION 16-17
1/8" = 1'-0"



ANODIZED ALUMINUM
PPG - PCNT28216
STATUARY BRONZE



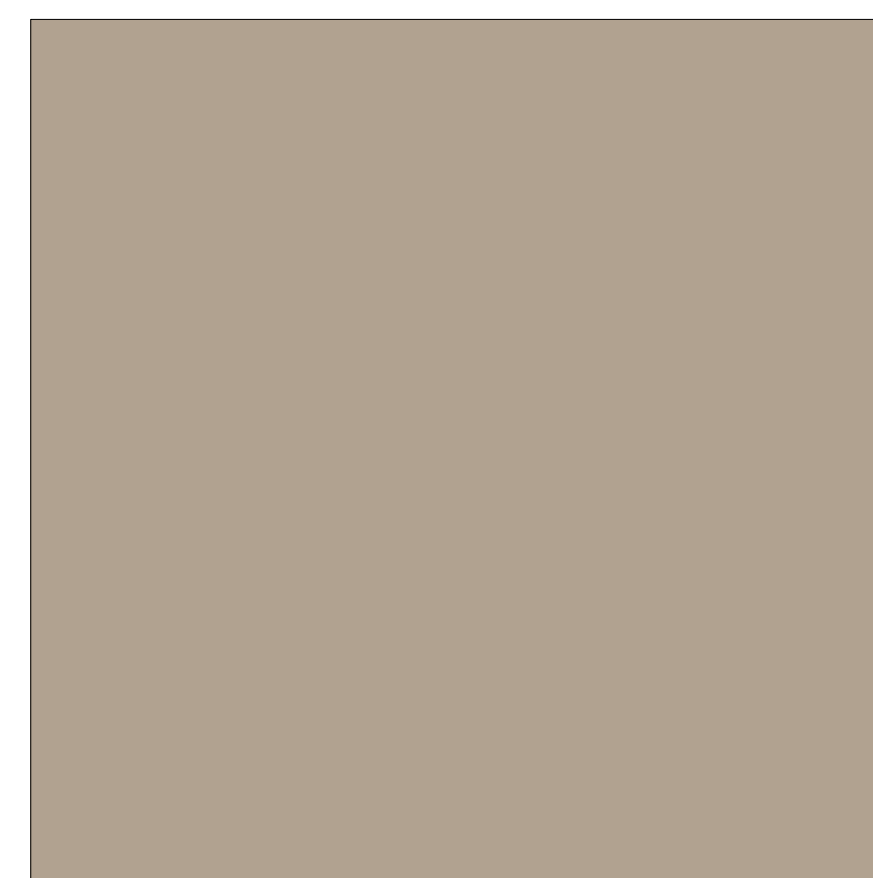
FIBER CEMENT CLADDING
NICHIHA
VINTAGEWOOD SPRUCE



CEMENT PLASTER
COLOR 1: SHERWIN-WILLIAMS
SW 7036 "ACCESSIBLE BEIGE"



BRICK VENEER
BELDEN BRICK
661 VELOUR



CEMENT PLASTER
COLOR 2: SHERWIN-WILLIAMS
SW 7038 "TONY TAUPE"



ANODIZED ALUMINUM
PPG - PCNT78163
ECLIPSE GRAY



① PERSPECTIVE - SOUTH/WEST



② PERSPECTIVE - SOUTH/EAST



① PERSPECTIVE - NORTH/WEST



② PERSPECTIVE - NORTH/EAST